

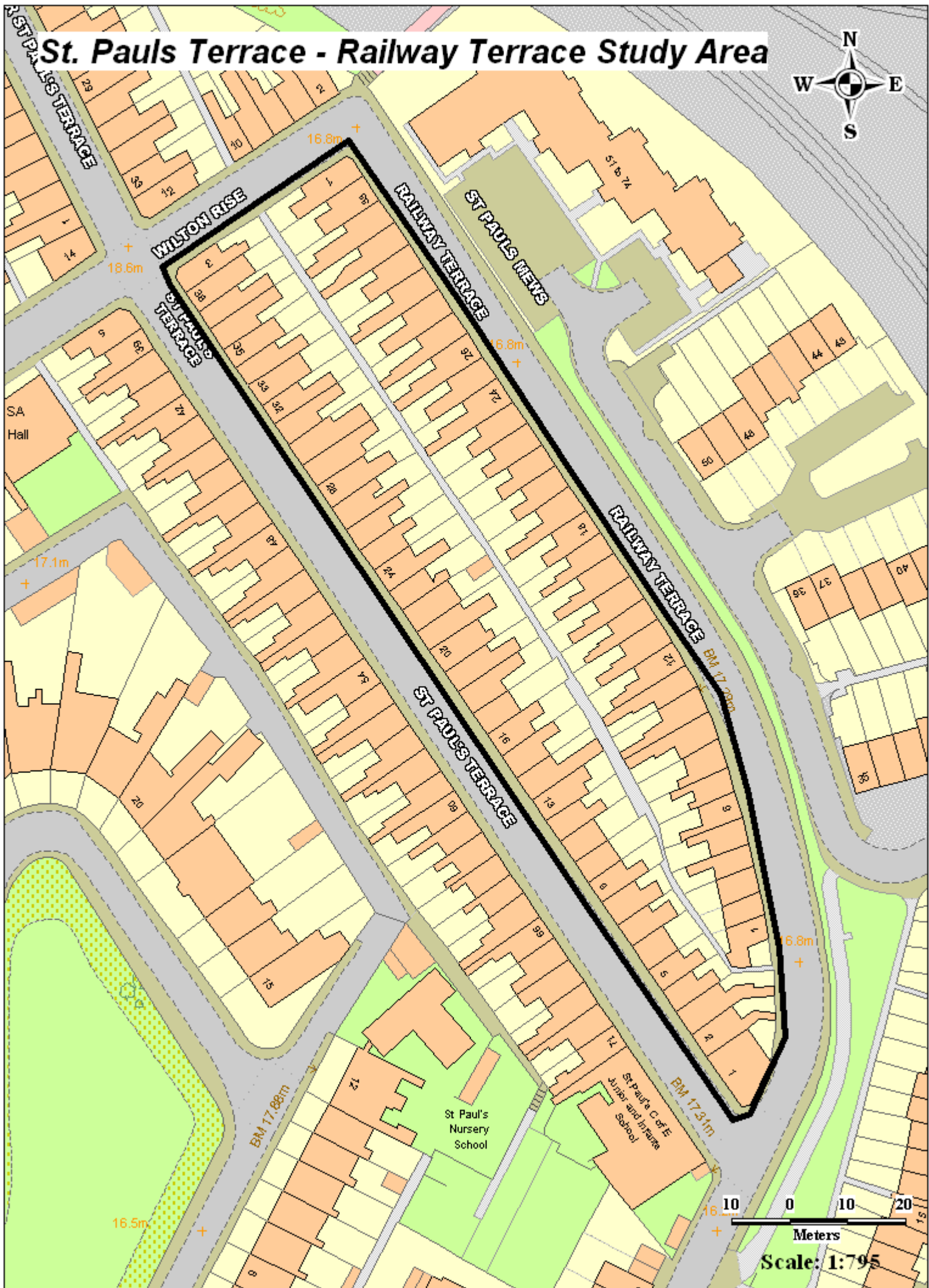
# ANNEX 3

## St. Pauls Terrace

Crime and Anti-social Behaviour  
Reports

October 2008 to September 2009

# St. Pauls Terrace - Railway Terrace Study Area



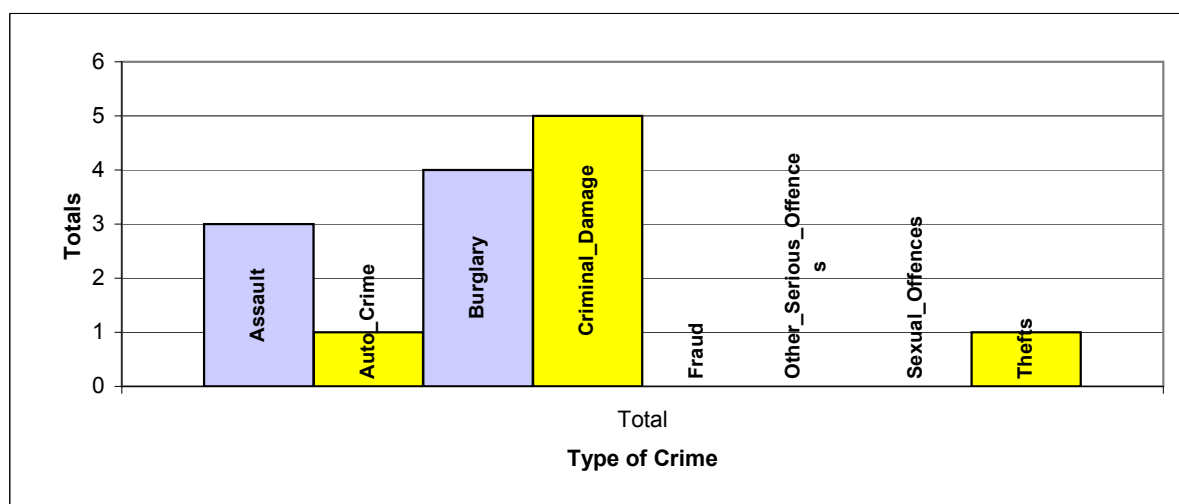
10 0 10 20  
Meters  
Scale: 1:795

# Crime Statistics

Crime Analysis Study Area:	=	<b>St Pauls Terrace - Railway Terrace</b>
Planning Application Reference:	=	
Size of Study Area from Application	=	<b>Please see Map</b>
Study Period Start:	=	<b>01/10/2008</b>
Study Period End:	=	<b>30/09/2009</b>
Date Study Completed	=	<b>15/10/2009</b>
Number of Months in Study Period	=	<b>12</b>
Geocoding Accuracy Rate	=	<b>95%</b>

Crime Group	Total
Assault	3
Auto_Crime	1
Burglary	4
Criminal_Damage	5
Fraud	0
Other_Serious_Offences	0
Sexual_Offences	0
Thefts	1
<b>Grand Total</b>	<b>14</b>

**A Table of Crime in the Study Area (Above) and corresponding Graph (Below)**



**A Table of Crime by Crime Group and then Crime Type**

EVENT_GROUP	HO_DESCRIPTION	Total
ASSAULT	COMMON ASSAULT ETC.	2
	OTHER WOUNDING ETC.	1
AUTO_CRIME	THEFT FROM VEHICLE	1
BURGLARY	BURGLARY IN A DWELLING	4
CRIMINAL_DAMAGE	CRIMINAL DAMAGE TO DWELLINGS	5
THEFTS	THEFT OF PEDAL CYCLE	1
Grand Total		14

**A Table of Crime by Month of the Year and Hour of the Day in the Study Area**

Month	Total
Jan	1
Feb	2
Mar	1
Apr	2
May	1
Jun	1

Month	Total
Jul	0
Aug	1
Sep	0
Oct	2
Nov	2
Dec	1

Crime Day	Total
Mon	2
Tue	3
Wed	2
Thu	2
Fri	0
Sat	3
Sun	2
<b>Grand Total</b>	<b>14</b>

**Grand Total**

**14**

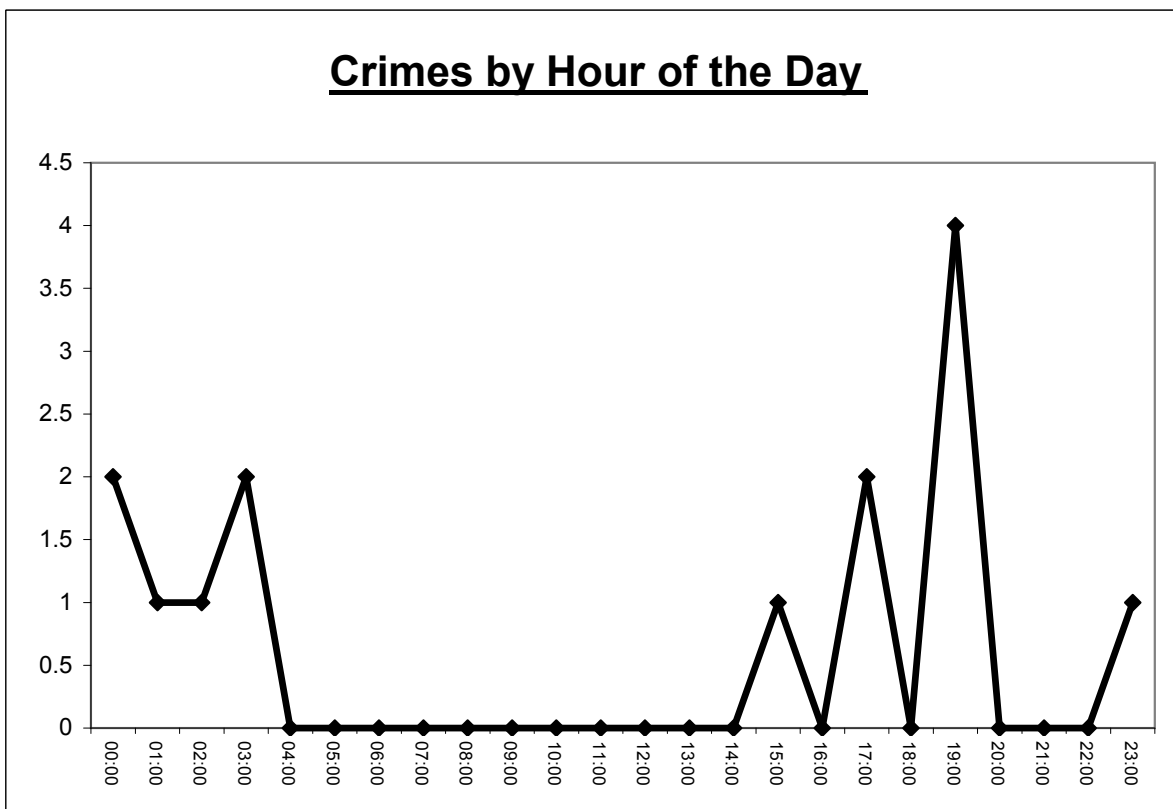
Expected Average Crime per Month = **1.17**

Expected Average Crime per Day = **2**

**A Table of Crime by Hour of the Day in the Study Area**

	00:00	01:00	02:00	03:00	04:00	05:00	06:00	07:00	08:00	09:00	10:00	11:00	12:00	13:00	14:00	15:00	16:00	17:00	18:00	19:00	20:00	21:00	22:00	23:00	Total
Total	2	1	1	2	0	0	0	0	0	0	0	0	0	0	0	1	0	2	0	4	0	0	0	1	14

**Crimes by Hour of the Day**

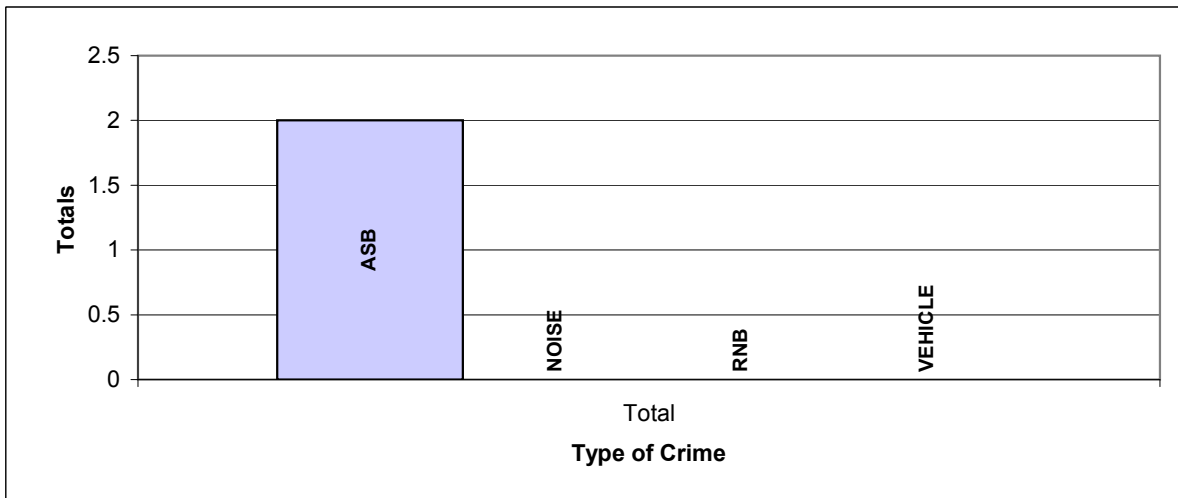


# NYP ASB General Incidents Report

ASB Analysis Study Area:	=	<b>St Pauls Terrace - Railway Terrace</b>
Planning Application Reference:	=	
Size of Study Area from Application	=	<b>Please See Map</b>
Study Period Start:	=	<b>01/10/2008</b>
Study Period End:	=	<b>30/09/2009</b>
Date Study Completed	=	<b>15/10/2009</b>
Number of Months in Study Period	=	<b>12</b>
Geocoding Accuracy Rate	=	<b>95%</b>

ASB Incident Group	Total
ASB	2
NOISE	0
RNB	0
VEHICLE	0
<b>Grand Total</b>	<b>2</b>

**A Table of NYP ASB Incidents in the Study Area (Above) and corresponding Graph (Below)**



**THIS REPORT DOES NOT CONTAIN ANY NORTH YORKSHIRE POLICE ASB INCIDENTS THAT HAVE BEEN CONVERTED IN TO CRIMES**

**A Table of ASB by ASB Group and then Incident Heading**

EVENT_GROUP	INCIDENT_HEADING	Total
ASB	ABANDONED	1
	NEIGHBOUR	1
Grand Total		2

FURTHER DETAIL OF THE ABOVE DESCRIPTIONS ARE AS FOLLOWS: ABANDONED = ABANDONED CARS, COMMS = COMMUNICATIONS, VEHNUISANCE = VEHICLE NUISANCE, RNB = ROWDY AND NUISNCE BEHAVIOUR, SUBMIS = SUBSTANCE MISUSE

**A Table of ASB Incidents by Month of the Year and Hour of the Day in the Study Area**

Month	Total
Jan	0
Feb	0
Mar	0
Apr	1
May	0
Jun	0

Month	Total
Jul	0
Aug	0
Sep	1
Oct	0
Nov	0
Dec	0

Day	Total
Mon	1
Tue	0
Wed	0
Thu	0
Fri	0
Sat	1
Sun	0
<b>Grand Total</b>	<b>2</b>

**Grand Total**

**2**

Expected Average Incidents per Month = **0.17**

Expected Average Incidents per Day = **0.29**

**A Table of NYP ASB Incidents by Hour of the Day in the Study Area**

	00:00	01:00	02:00	03:00	04:00	05:00	06:00	07:00	08:00	09:00	10:00	11:00	12:00	13:00	14:00	15:00	16:00	17:00	18:00	19:00	20:00	21:00	22:00	23:00	Total
Total	0	0	0	0	0	0	0	0	0	0	0	0	0	0	0	0	1	0	0	0	0	0	0	1	2

